

NORMA Compression Fittings



PN 16 - For watering, irrigation and industry

NORMA Group is an international leader in connection technology. The group produces a wide range of innovative connection solutions. Our range of compression fittings allows fast, secure connection of polyethylene tubing for any industrial, commercial or domestic need. Our polypropylene fittings enable the user to make a pipe connection without having to dismantle the fitting.

NORMA Group
Postfach 1149 · D-63461 Maintal
Edisonstraße 4 · D-63477 Maintal
Tel.: +49 (6181) 4 03-0
Fax: +49 (6181) 4 03-210
www.normagroup.com
info@normagroup.com

This folder supersedes all previous issues. All rights reserved in all countries. No part of this publication may be reproduced without our prior written consent. In NORMA Group's policy of continual product improvements to meet user needs and technological developments, all models and sets listed in this folder (photographs, specifications, sizes and weights) may be upgraded or discontinued without notice and without any obligation on our part to modify tools or equipment sold previously. The recommendations for use and safety given in this folder do not replace accepted good practice or the safety-related legal and regulatory provisions. References to standards in force at 01/10/2013 are not contractually binding.



NORMA Compression fittings PN 16 for non-potable water

Description

Pressure rating: the rated pressure indicates the ability to resist internal water pressure. It corresponds to a constantly maintained pressure that the component must withstand without failure and with proper safety.

Made of polypropylene for high- and low-density polyethylene tubing. Easy to use.

High resistance to temperature and ultraviolet shocks.

Quality certificate

NORMA® products are made in factories certified under ISO 9001 Version 2008. NORMA® fittings are tested and approved according to these standards: ISO 14236 (Czech Republic), ITC (Poland), BS Standard 5114, AS/NZ 4129, AS 4020.

Sanitary compliance

NORMA® products are not certified as compliant with international sanitary regulations for transport of potable water and liquid foods.

Properties

External clamping on high- and low-density polyethylene tubing, diameters 16 to 110 mm.

Maximum service pressure: PN 16 bars from diameter 16 to diameter 63 mm - PN 12.5 bars from diameter 75 to diameter 110 mm.

DOES NOT INCLUDE hot water application.

Uses

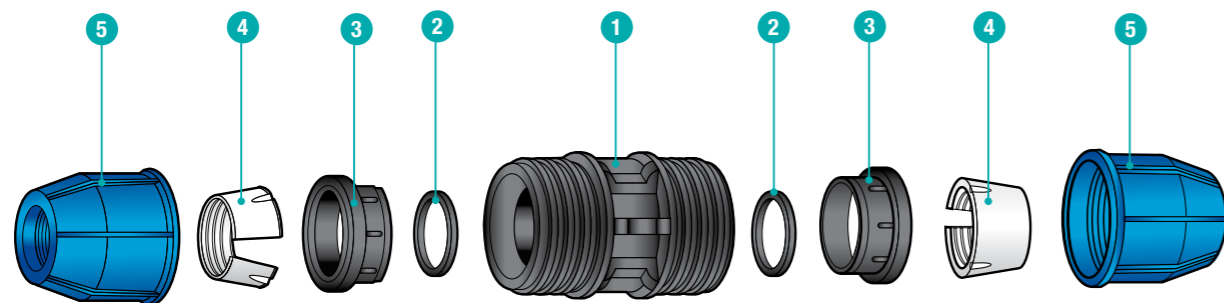
The range is specifically intended for installing watering and irrigation networks.

Watering Residential, municipal, sport fields, golf courses.

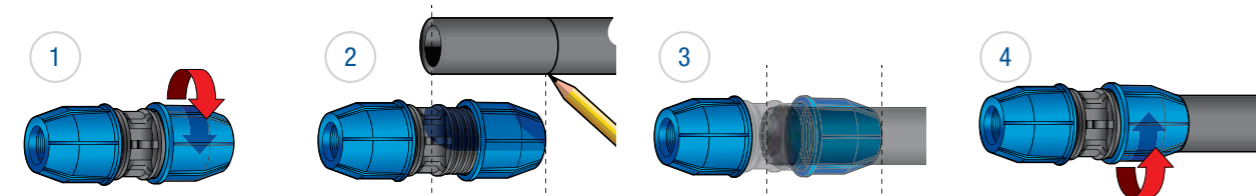
Irrigation Agriculture, horticulture, vineyards.

Industry Compressed air.

Compression fitting



No.	Designation	Material
1	Body	Polypropylene
2	O-ring	NBR
3	Holder	Polypropylene
4	Clinching Ring	POM, acetal
5	Locking Nut	Polypropylene



Step 1
Unscrew the nut until the last thread.

Step 2
Cut the pipe and deburr it if necessary, in the insert depth.

Step 3
Push the pipe, without unscrewing the nut until the mark. For that, you should push the pipe until reaching the clamping ring and the gasket.

Step 4
Screw and tighten the nut firmly. The nut can be tightened manually.

NORMA Compression fittings PN 16 for non-potable water



MALE THREADED ADAPTOR

20 x 1/2" 3/4" 1"
25 x 1/2" 3/4" 1"
32 x 1/2" 3/4" 1" 1 1/4"
40 x 3/4" 1" 1 1/4" 1 1/2"
50 x 1 1/4" 1 1/2" 2"
63 x 1 1/2" 2"
75 x 2" 2 1/2"
90 x 3"



FEMALE THREADED ADAPTOR

20 x 1/2" 3/4"
25 x 1/2" 3/4" 1"
32 x 3/4" 1" 1 1/4"
40 x 1" 1 1/4" 1 1/2"
50 x 1 1/2" 2"
63 x 1 1/2" 2"
75 x 2" 2 1/2"
90 x 3"
110 x 4"



MALE THREADED TEE

20 x 1/2" 3/4"
25 x 1/2" 3/4" 1"
32 x 3/4" 1"
40 x 1" 1 1/4"
50 x 1 1/4" 1 1/2"
63 x 2"
75 x 2" 2 1/2"
90 x 3"
110 x 4"



FEMALE THREADED TEE

20 x 1/2" 3/4"
25 x 1/2" 3/4" 1"
32 x 3/4" 1" 1 1/4"
40 x 1" 1 1/4" 1 1/2"
50 x 1 1/2" 2"
63 x 1 1/2" 2"
75 x 2 1/2"
90 x 3"
110 x 4"



MALE THREADED ELBOW - MALE BEND 90

20 x 1/2" 3/4"
25 x 1/2" 3/4" 1"
32 x 3/4" 1"
40 x 1" 1 1/4" 1 1/2"
50 x 1 1/4" 1 1/2" 2"
63 x 2"
75 x 2" 2 1/2"
90 x 3"
110 x 4"



FEMALE THREADED ELBOW - FEMALE BEND 90

20 x 1/2" 3/4"
25 x 1/2" 3/4" 1"
32 x 1/2" 3/4" 1" 1 1/4"
40 x 1" 1 1/4" 1 1/2"
50 x 1 1/4" 1 1/2" 2"
63 x 1 1/2" 2"
75 x 2 1/2"
90 x 3"
110 x 4"



STRAIGHT COUPLER

20 x 20
25 x 25
32 x 32
40 x 40
50 x 50
63 x 63
75 x 75
90 x 90
110 x 110



EQUAL BEND

20 x 20
25 x 25
32 x 32
40 x 40
50 x 50
63 x 63
75 x 75
90 x 90
110 x 110



EQUAL TEE

20 x 20
25 x 25
32 x 32
40 x 40
50 x 50
63 x 63
75 x 75
90 x 90
110 x 110



END CAP

20 x 20
25 x 25
32 x 32
40 x 40
50 x 50
63 x 63
75 x 75
90 x 90
110 x 110



REDUCING COUPLER

25 x 20
32 x 20 25
40 x 20 25 32
50 x 20 25 32 40
63 x 25 32 40 50
75 x 40 50 63
90 x 63 75
110 x 90



REDUCING TEE

25 x 20
32 x 20 25
40 x 25 32
50 x 25 32 40
63 x 32 40 50
75 x 40 50 63
90 x 63 75
110 x 90



FLANGE ADAPTOR

63 x 50
90 x 80
110 x 100



POP-UP EQUAL BEND

20 x 1/2"
25 x 1/2"
32 x 3/4"



WALL PLATE ELBOW

25 x 3/4"



MALE THREADED ADAPTOR WITH BRASS

20 x 1/2"
25 x 3/4" 1"
32 x 1"



FEMALE THREADED WITH BRASS INSERT

20 x 1/2"
25 x 3/4" 1"
32 x 1"



FEMALE THREADED BEND WITH BRASS INSERT

20 x 3/4"
25 x 3/4"
32 x 1"